

# Airbase

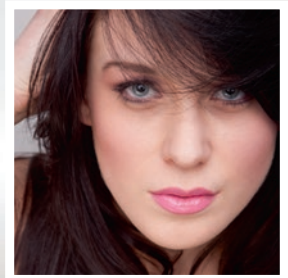
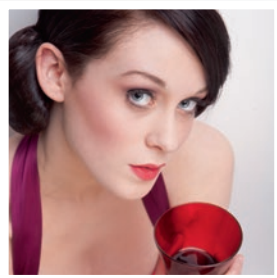
HIGH DEFINITION AIRBRUSH MAKE-UP

## HIGH DEFINITION Airbrush Make-Up System



Fast, Flawless, Natural  
and Long Lasting

Contains all that you need to produce a  
flawless application of make-up at home, giving  
you a perfect movie star complexion in minutes



# Your HD Airbrush Make-Up System

Open your HD Airbrush Make-Up System by depressing the two green buttons on the front of the unit. When open, remove the protective cover from the mirror.

## 1. Assemble your Airbrush

- A** Screw the connector to the body of the airbrush.
- B** Attach the hose to the body of the airbrush.

## 2. Preparing your High Definition Airbrush Make-Up System for use

- C** Remove the plug from the recess and attach to the socket in the back of the unit. Plug this in to your mains supply.
- D** Switch on the unit with the on/off button located to the left of the unit. This provides the airbrush with a continuous flow of air.
- E** Turn the lights on as desired using the switch to the right of the mirror.

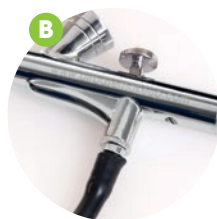
**You're good to go!**

## 3. Applying your High Definition Make-Up

- F** Decant 4-6 drops of foundation in to the product cup (top up as required).

**PRO TIP:** You can mix drops of different Airbase Foundation shades to produce your exact match.

Removable Mixing Tray to mix your foundation shades if you are applying with the Airbase Foundation Brush.



First, test the flow of make-up. To do this, pull back the airbrush trigger and direct the nozzle towards the back of your hand or trial this on a tissue. When the make-up begins to flow you are ready to spray on to your face.

Hold 5 - 10cm from your face and apply as desired using circular movements. When working around your nose it is important to breathe out. When working near to your eyes, ensure that you close your eyes. You will feel where you are applying the make-up by the light air spraying on to your face.

**PRO TIP:** To avoid unwanted build-up of foundation, blush or bronze in one area of the face, always keep the airbrush moving.

To cover blemishes and pimples move your airbrush a little closer concentrating a little more make-up on the area to be covered.

Finish your look with the desired blush or bronze.

When the airbrush is in use but at rest, place in the convenient airbrush holder as shown.

NB. When your HD Airbrush System first arrives you may wish to practice spraying with just water.

## 4. After use

Spray any remaining make-up out of the airbrush (try rocking forward and backward on the trigger whilst spraying in to a tissue). Wipe out excess product from the airbrush cup with a tissue.

- H** Place 3-4 drops of Airbase Thinner and Cleaner in to the airbrush cup. Spray this on to a tissue to remove any excess make-up and to avoid your airbrush clogging up.

When the airbrush cup is empty, replace in it's recess in the unit. **Always ensure that your airbrush is cleaned after each use to avoid build up of product - keeping your airbrush in tip top condition.**

**PRO TIP:** After cleaning leave 2-3 drops of Thinner and Cleaner in your airbrush to prevent any make-up drying in your equipment.

# Trouble Shooting

**Should your HD Home Use Airbrush System not be spraying as you require, here are some solutions to help you.**

## No Product Flow

1. Check that the needle is correctly inserted in to the airbrush. Remove the back of the airbrush, loosen the locking nut and pull the needle back. Reinsert gently in to the airbrush so that the needle is just visible from the front of the airbrush. Tighten the locking nut and replace the back of the airbrush.
2. If the airbrush still does not spray, dismantle the airbrush and perform a deep cleanse as directed opposite.

## Spitting Product

1. Remove the needle and nozzle cap at the front (spraying end of the airbrush). Check that the cone shaped nozzle is not damaged in any way. If it is fractured this can cause spitting and you will need to replace the nozzle for optimum performance.
2. Check that the needle is correctly inserted in to the airbrush. Remove the back of the airbrush, loosen the locking nut and pull the needle back. Reinsert gently in to the airbrush so that the needle is just visible from the front of the airbrush. Tighten the locking nut and replace the back of the airbrush.
3. If the airbrush continues to 'spit' spray just water through. If the flow is even then thick foundation is the issue. Thin the foundation when in the airbrush cup with a little (2-3 drops) Airbase Thinner and Cleaner.

## No Air Flow

1. Remove the needle and nozzle cap at the front (spraying end of the airbrush). Check that the cone shaped nozzle is not damaged in anyway. If it is damaged, causing closure of the small hole the needle protrudes through this can cause loss of air flow and you will need to replace the nozzle.
2. Check the socket that the unit is plugged in to has power AND IS SWITCHED ON.
3. Check the airbrush hose is securely fitted to the airbrush.

## Deep Cleanse of your Airbrush

See our online guide.

1. Gently unscrew and remove the back of the airbrush.
2. Loosen the locking nut and remove the needle.
3. Unscrew and remove the spring case and split pin, needle guide, trigger and saddle.
4. Unscrew the nozzle cap and needle cap (from the front on the brush).
5. Clean all parts using Airbase Thinner and Cleaner and a soft brush or disposable mascara wand.
6. Dry using a paper towel or soft cloth and rebuild.
7. Reassemble your airbrush making sure the locking nut is tightly screwed.

ONLY if the nozzle becomes damaged should it be removed using the wrench provided. Replace and re-tighten ensuring you do not cross thread the nozzle.

**WARNING! Do not over tighten** this will cause the nozzle to shear off from the body of the airbrush.

When cleaning, undo the back of the airbrush and pull back the needle trigger so that the needle is no longer visible when you look in to the colour cup. This will protect the needle from accidental damage.

## ATTENTION

1. This HD Airbrush Make-up System is only for use with Airbase Make-up.
2. Be sure that no items are sticking out of the unit before closing. The pressure of these items as you close the lid could break your mirror.
3. This is not a toy and is intended for use by adults only. Use of the unit, including cleaning and maintenance should not be undertaken by children. For adult use only.
4. For additional protection, the installation of a residual current device (RCD) having a rated residual operating current not exceeding 30mA is advisable in the electrical circuit supplying the bathroom. Ask your installer for advice.
5. The appliance is not to be used by persons with reduced physical, sensory or mental capabilities, or lack of experience and knowledge, unless they have been given supervision or instruction. Please refer to the instructions provided.

Please retain this information for future reference.

[www.airbasemakeup.com](http://www.airbasemakeup.com)

Airbase Make-Up, 72a Windsor Street, Beeston, Nottingham, UK, NG9 2BW

 [twitter.com/AirbaseMakeUp](https://twitter.com/AirbaseMakeUp)  [facebook.com/AirbaseMakeUp](https://facebook.com/AirbaseMakeUp)

Edition: May 2020

